

ReKisstory Compare Section Manual

2024-06-03

Go Sugimoto

What is the Compare section?

- Compare “fact of items” (see below) of user’s choice, focusing mostly on time and space
- Example: compare the career of Lionel Messi and Cristiano Ronald
- Present the results in Table, Map, and Timeline view
- Use it, when you know which items to compare. If you do not know, use Find section

What are the fact items?

- Data you can search in ReKisstory
- Nearly the same as Wikipedia article entries
- Persons, places, books, films, products, events, buildings, planets, animals, plants, planets, chemical elements, systems, theories, ideas, concepts etc. Something has a name and can be found in Wikipedia
- All items have unique identifier with prefix Q (e.g. [Human \(Q5\)](#), [Harrison Ford\(Q81328\)](#))
- In addition, there are relations which connect fact items. All relations have unique identifiers with prefix P (e.g. [residence \(P551\)](#), [member of \(P463\)](#))
- There are 100 million+ items (source data is called [Wikidata](#)), and [11,000+ relations](#)

How does the Compare section work?

Two modes can be changed by clicking a tab on top:

- **Simple mode**
 - User specifies at least one fact item in the input box
 - Up to four items can be compared
 - Start typing at least 3 characters to see auto-suggestion of items
- **Advanced mode**
 - Simple mode, plus a possibility to specify how the results will be shown
 - “Contextual timeline” will include periods in the timeline such as popes, Japanese eras, art movements, so that the fact items can be displayed in context side by side
 - “Timeline grouping” allows user to change the grouping of items in the timeline
 - “Data filter” enables users to filter the results by time only, place only, media only, and core in order to hide lengthy data
 - “Language” can be changed for data labels in the results

- If the user specifies a person as an item, s/he can check the “More creative works” checkbox on. This will include more (minor) artworks created by the person.

The results contains:

- **Table view:** showing the data about the fact items in a tabular view
- **Map view:** showing spatial dimension of the fact items (geographical coordinates)
- **Timeline view:** showing the temporal dimension of the fact items (point in time and duration)
- **Download section** allows users to download the results of the fact items as well as contextual timeline data
- **Wikipedia articles** of fact items

Simple mode

Easy mode to compare up to four items by auto-suggest

Expand Instructions when you are lost

Start typing 3+ characters to see suggestion items (this will take few seconds)

No suggestions? Refresh the page or delete keywords and try again

Specify 1 item for test Compare. Add more for next round

Advanced Tab offers more flexibility

Compare Items

Simple Advanced

Instructions ▾

Select up to 4 Items (e.g. Q9202 Statue of Liberty, Q154708 Shinji Kagawa, Q219831 The Night Watch)

- 1 Start typing here to find 1st item
- 2 Start typing here to find 2nd item
- 3 Start typing here to find 3rd item
- 4 Start typing here to find 4th item

Compare Items

Advanced mode

Specify more details about how the results should be shown

If you specify a person, you can add data about less-known artworks created by the person (books, articles, paintings, and films). This slows down the search due to a potentially high volume of results

Specify how the results will be grouped in Timeline

- ✓ By Relation
- By Item
- No Grouping

Specify (by auto-suggest) the language in which the results will be presented

- slo
- sk:Slovak**
- sl:Slovenian**

Select up to 4 items (e.g. Q9202 Statue of Liberty, Q154708 Shingji Kagawa, Q219831 The Night Watch)

- 1 Start typing here to find 1st item
- 2 Start typing here to find 2nd item
- 3 Start typing here to find 3rd item
- 4 Start typing here to find 4th item

More creative art works

More creative art works

More creative art works

More creative art works

Specify the type of contextual timeline

None

Select what data to compare

Core

Type of Grouping in Timeline

By Relation

Language for your search results (default: English)

Start typing here to find a language

Compare Items

Select which background info (periods) to be added to Timeline

- ✓ None
- Popes
- Japanese Era
- Art movement (AD/CE)
- Architectural style (AD/CE)
- US president
- EU member population since 1960

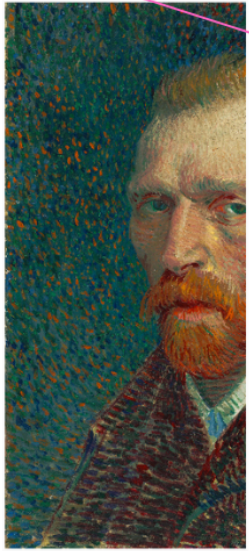
Filter your results by Only Time, Only Places, Only Media, and Core

- ✓ Core
- Time only
- Place only
- Media only
- All without ID references
- All
- Custom

Results

Search Results for

Vincent van Gogh  Paul Gauguin 





Link to other website for the item

Color indicator of each item, which will be used consistently across the results (table, map, timeline)

25.107 seconds

Query time, indicating the simplicity of your query. More than 60 seconds will return an error

Color	Item	Relation	Object	Inverse Rel...	Image	S...
●	Paul Gauguin	residence	Frederiksberg			1884-01-01
●	Vincent van Gogh	work location	Antwerp			1885-01-01

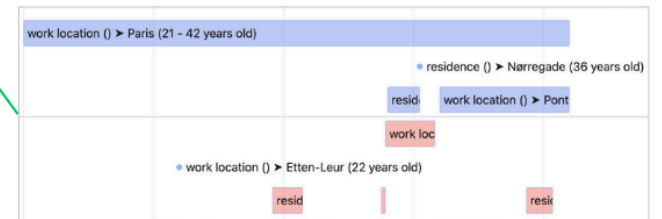
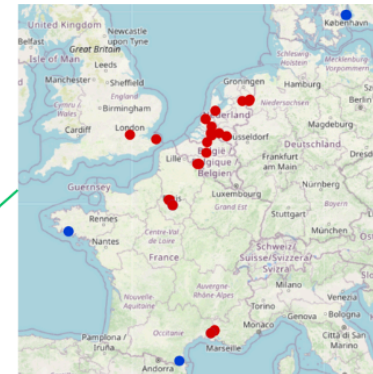


Table View

The list of results in Table. By default, it is sorted by Start Time column in this order: no dates, from early to late dates

Type keywords to filter the results

Filter your results with a keyword

Type a keyword...

Image of Object (if available)

Sorting by column

C...	Item	Relation	Object	Inverse Relati...	Image	St...	Start ...	E..	End ...	Data Sou...	Fact Sou...
•	Egon Schiele	image	Click here				? years ? months old ()		? years ? months old ()	Wikidata	Check this fact
•	Egon Schiele	place of birth	Tulln an der Donau				? years ? months old ()		? years ? months old ()	Wikidata	Check this fact

Color indicator of this item (when multiple items are present)

Read like a sentence

<Egon Schiele> 's <place of birth> is <Tulln an der Donau>

Check where this info comes from (Source website and exact detail)

Q: What does the “more creative work” checkbox in the Advanced tab do?

A: If you specify a person as a search item, you get more results from minor artworks of the person

If you search Gustav Klimt with the checkbox “More creative work” on, a notable works and minor art work will be found. Here is the explanation of the differences

Note the position of Klimt

<Gustav Klimt> 's <notable work> is <Beethoven Frieze> & (implicitly specified date is) <1902-01-01>

●	Gustav Klimt	notable work	Beethoven Frieze		1902-01-01	39 years 5 months old (during or after lifetime)	
●	Mohnfeld	creator	Gustav Klimt	inception		1907-01-01	44 years 5 months old (during or after lifetime)

Note the position of Klimt

<Mohnfeld> 's <creator> is <Gustav Klimt> & <inception> is <1907-01-01>

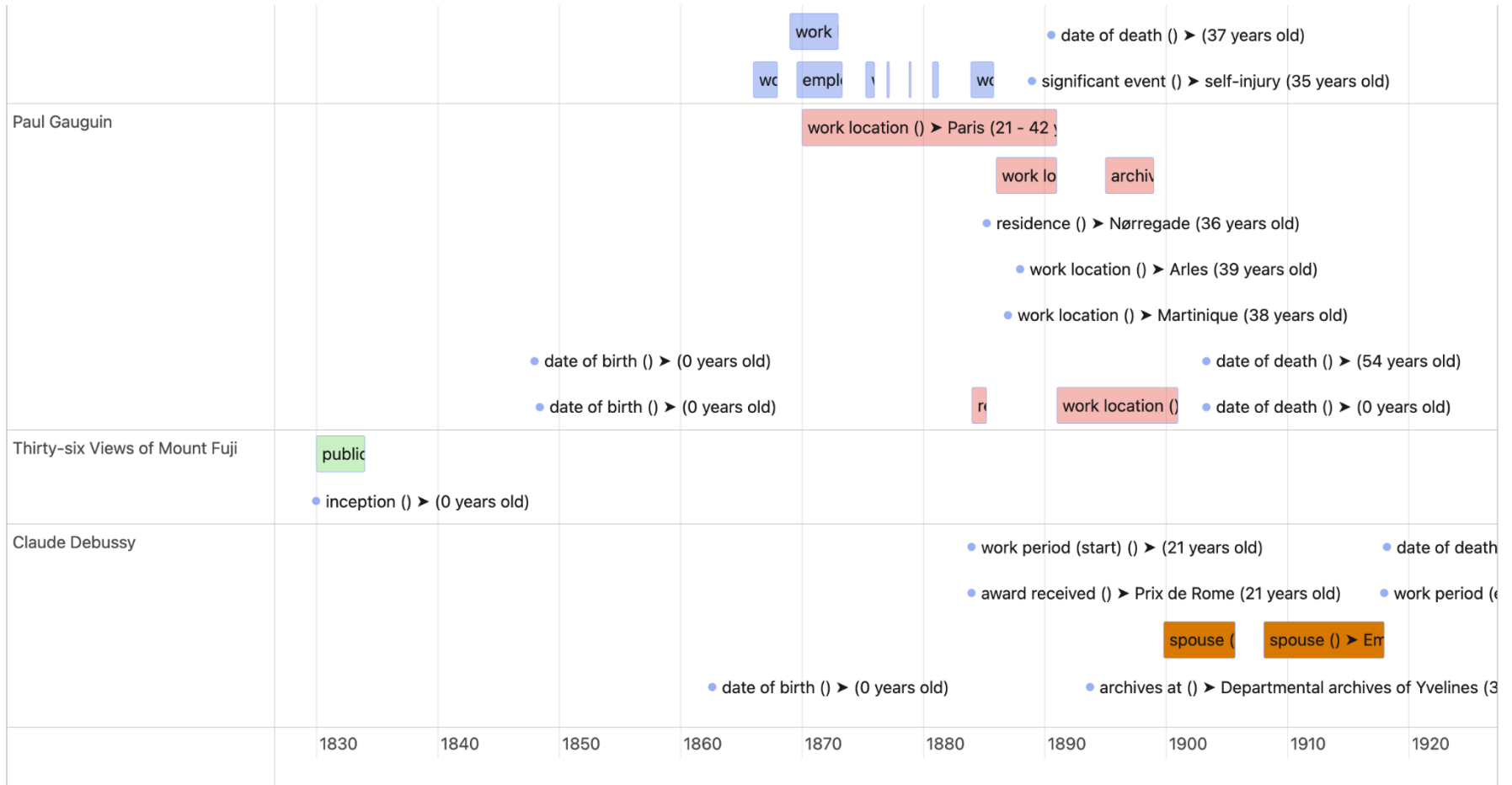
This record will be only found, when “More creative works” checkbox is on

Age of Klimt when Beethoven Frieze and Mohnfeld were created

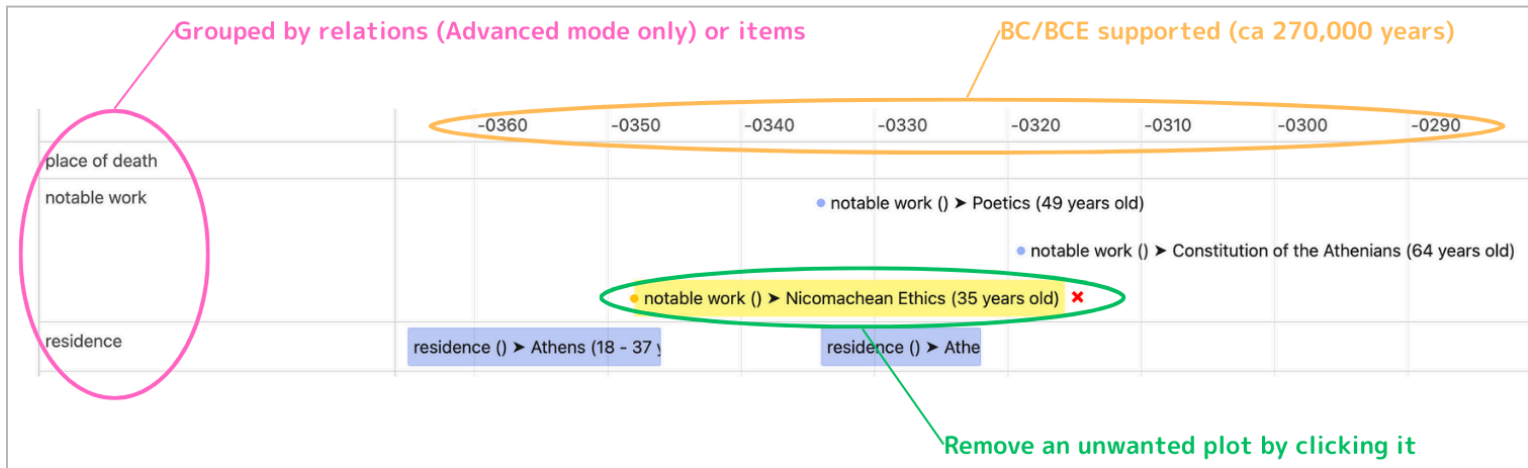
Timeline view

The temporal data about the fact items (lifetime events) are plotted in the timeline

It is grouped by item or relations (advanced mode only) in the left column. You can zoom in and out with the mouse wheel. Calculated age of the item is also included. Links on the plot are clickable to jump to the provenance information. Different colors correspond to the color indication of each item mentioned above. By clicking an item on the timeline, you can also remove it to clean the timeline.



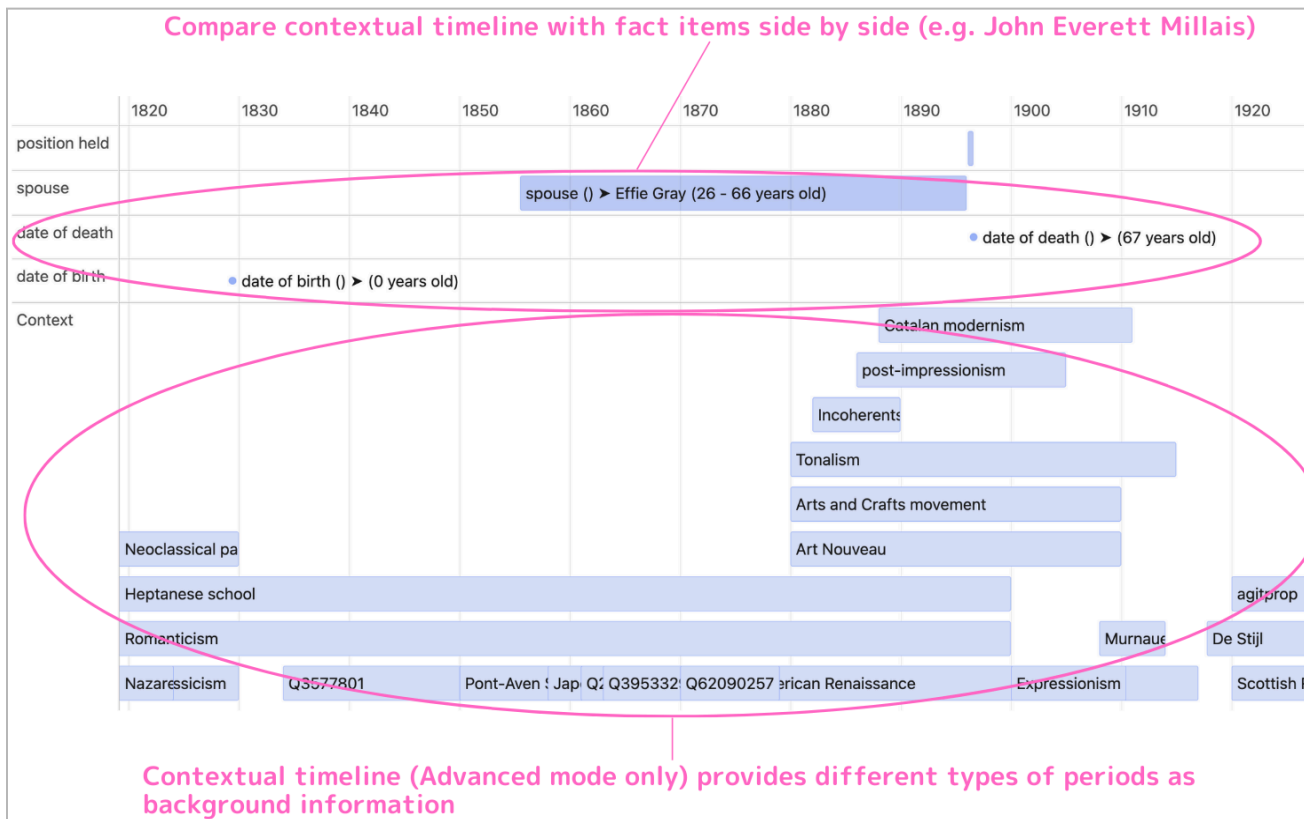
● Vincent van Gogh
 ● Paul Gauguin
 ● Thirty-six Views of Mount Fuji
 ● Claude Debussy



Q: What does the “Contextual Timeline” selection in the Advanced tab do?

A: Background info of the time (periods) will be shown at the bottom of the Timeline

It may be handy to check the art movements as a context of your comparison, e.g. when you search Millais (his dates of birth, death, and marriage are shown)



Download

You can download the search results and the contextual timeline (see above) as CSV file

Download data in CSV

Download context data in CSV

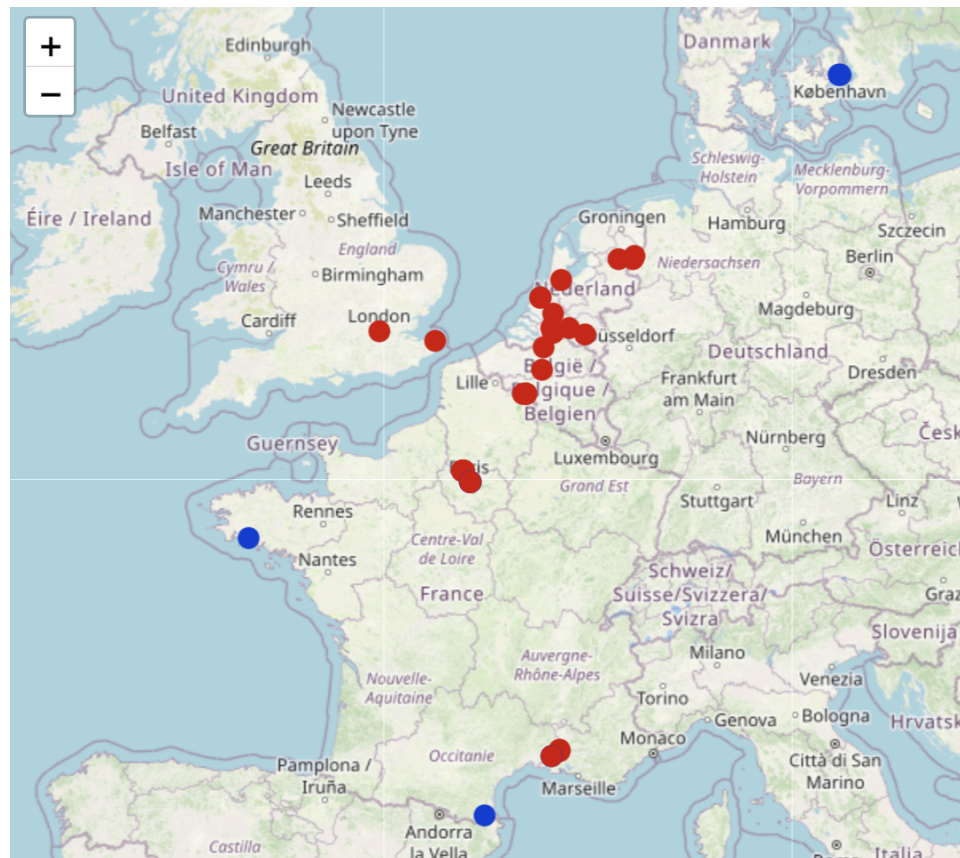
Map view

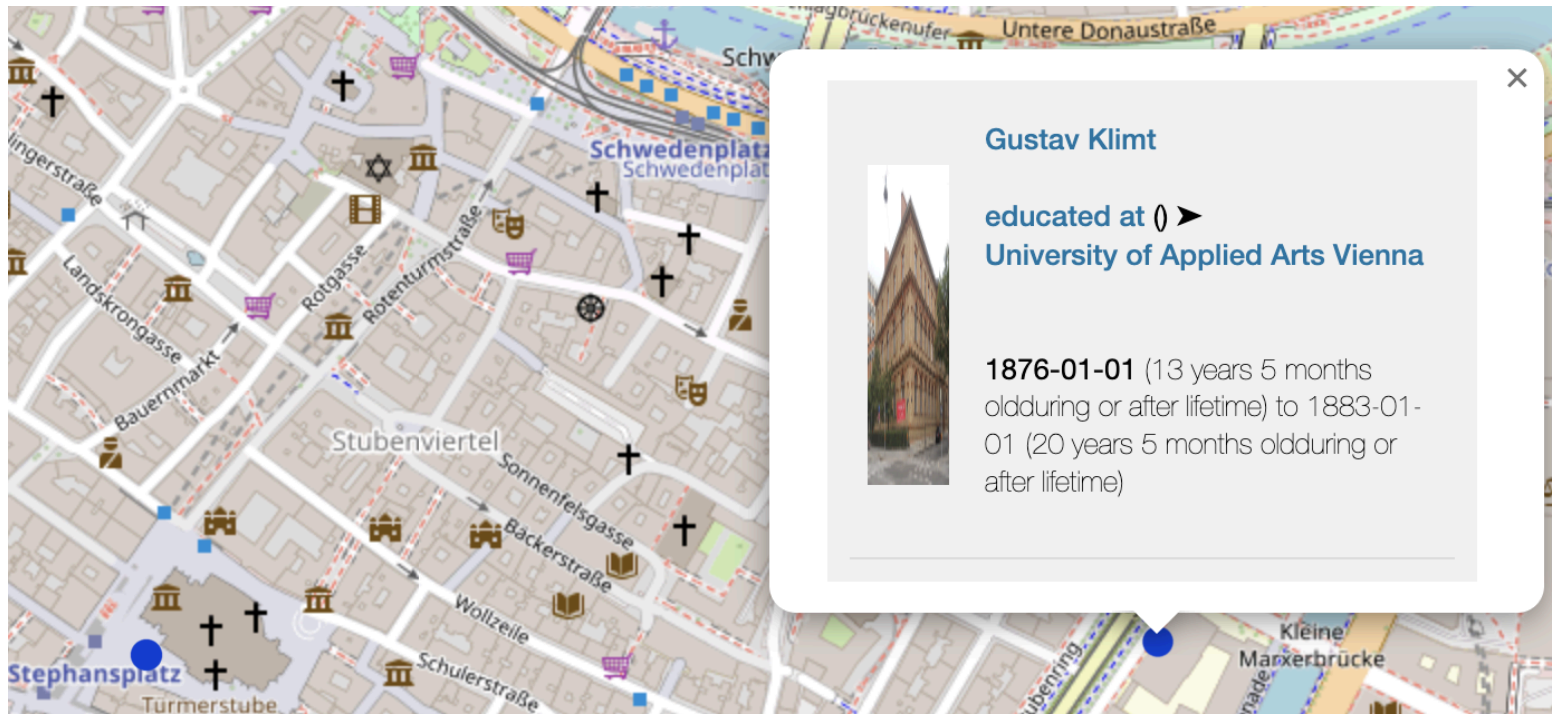
If spatial coordinates are available, the items are plotted with different colors on the map

Zoom in and out with a mouse wheel or button at the top left corner

Just click a pin to see more information. Many hyperlinks in the popup window are clickable

If present, 2nd relation would be shown in Parentheses ()





Gustav Klimt

educated at  **University of Applied Arts Vienna**



1876-01-01 (13 years 5 months old during or after lifetime) to **1883-01-01** (20 years 5 months old during or after lifetime)

Other features

More information is available at the bottom of the result page

Expand **Note** to see the details of results and visualization including the dates and languages used in the tool.

If available, the corresponding **Wikipedia articles** of the items (in the user specified language) will be presented as a quick preview.

More info about results and visualization such as:

- How dates are dealt
- How language is dealt

- Duplicates (an item with multiple date possibilities etc) were removed
- You can edit the timeline items. Click the right space of an item (without clicking the hyperlink) and move or remove it (removed items cannot be recovered)

[Note](#) ▾

The screenshot shows the top navigation bar of Wikipedia. On the left, there is a hamburger menu icon, a globe icon, and the text 'WIKIPEDIA The Free Encyclopedia'. In the center, there is a search bar with the placeholder text 'Search Wikipedia' and a 'Search' button. On the right, there are links for 'Create account' and 'Log in' followed by a three-dot menu icon. Below the navigation bar, the title 'Isaac Newton' is displayed in a large, bold font. To the right of the title, there is a language selection icon and the text '226 languages' with a dropdown arrow.

Quick preview of Wikipedia article (if available)