

# ReKisstory Group Search Example

## Search Patterns

2024-05-29

Go Sugimoto

### Is it hard to use Group Search?

It is understandable, because it has a specific way of searching data. Why is it complicated? It is because our source data (Wikidata) is so big and diverse. Currently, there are 109,200,732 fact items of human knowledge. It is an advantage that we have so much data to search from, but it is not so simple to organize such big data in a uniform manner. Imagine how complicated it would be to find your fish from the big sea. But do not worry, here we can learn how to make the best out of it.

In this document, we will first present examples of search patterns for the ReKisstory Group Search. So, you can immediately copy and paste the patterns in the search interface for testing. You will also find some tips for the search. The examples are grouped by the type of searching items (people, building etc). By examining the examples, you would be able to intuitively understand what keywords should be filled in the input fields.

If it is not enough and you are keen to learn more, we will then outline how the Group Search actually works. You gradually learn about how our source data is organized (i.e. [WikiProject ontology](#)) and how best you can use Group Search to find information you look for.

## 1. Example Search Patterns

### Look for People

One of the most intuitive use cases of Group Search is to look for people (type: Q5 Human). However, you need to be careful about the amount of data you are querying. There are [3.6 million humans in the database \(December 2020\)](#), and it is expensive to query. In order to avoid the timeout of the query, it is **highly recommended to specify the query as much as possible**. In particular, use a filter, if you can ([Specific characteristic B](#) and [Specific characteristic type C](#)). You can also guess how many items you may get by looking at the number of query results and query execution time below. Queries costing more than 20 seconds could be considered expensive (The timeout is set for 60 seconds by default).

1) Women who lived in Paris in the 19th century: 21 results (xxx seconds)<sup>1</sup>

- Item type A: [human \(Q5\)](#)
- Specific characteristic B: [Sex or gender \(P21\)](#)
- Specific characteristic type C: Female (Q6581072)
- Main action/occurrence/property D: Residence (P551)
- Involved object E: Paris (Q90)
- Starting date F: "1801-01-01"
- End date G: "1900-12-31"

2) People who lived somewhere between 1900 and 2000 and died by accident: 69 results (xxx seconds)

- Item type A: [human \(Q5\)](#)
- Specific characteristic B: Manner of death (P1196)
- Specific characteristic type C: Accidental death (Q21142718)
- Main action/occurrence/property D: Residence (P551)
- Involved object E:
- Starting date F: "1900-01-01"
- End date G: "2000-01-01"

The setting is a little tricky with this case. Users need knowledge of source data structure (Wikidata). If you would like to specify a date (Starting date F and/or End date G), it has to be associated with Main action/occurrence/property D. So, it is decided to use "Residence" (P551) for this link. In other words, cannot be put "Accidental death" (Q21142718) in Main action/occurrence/property D, mainly because it is not directly associated with the date of death in Wikidata. Involved object E can be specified, but we look for the locations of residence in this query.

Similarly, at the moment, date ranges cannot be birthdate and death date. It is confusing, and we look for a better User eXperience to simplify the Wikidata complexity.

**Tip:** You can change Specific characteristic type C ([manner of death](#)) to other types of death including homicide (Q149086), suicide (Q10737), natural causes (Q3739104) etc, or use [cause of death](#) which requires more precise items including Cholera (Q12090), shot to the head (Q15824243), drowning (Q506616), and cancer (Q12078).

3) People who were born in Rome and worked somewhere between 1900 and 2000: 45 results (10.493 seconds)

- Item type A: [human \(Q5\)](#)
- Specific characteristic B: Birthplace (P19)

---

<sup>1</sup> Query performance is a result of testing and indication only. The amount of results and query time would vary, depending on the update of the source data (Wikidata) and other technical factors

- Specific characteristic type C: Rome (Q220)
- Main action/occurrence/property D: Work location (P937)
- Involved object E:
- Starting date F: "1900-01-01"
- End date G: "2000-01-01"

Tip: You can change Specific characteristic B to place of death (P20) or place of burial (P119) and Specific characteristic type C to other cities such as Rio de Janeiro (Q8678) and Hong Kong (Q8646)

4) People who were born in Rome and worked somewhere between 1900 and 2000: 45 results (10.493 seconds)

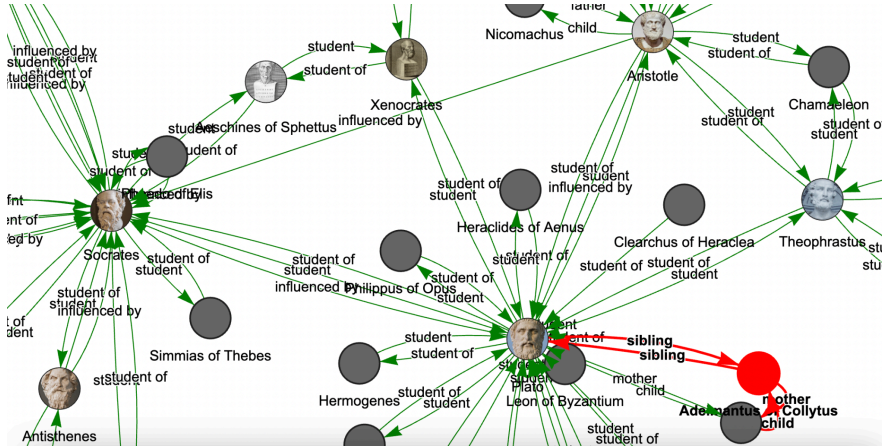
- Item type A: [human \(Q5\)](#)
- Specific characteristic B: Birthplace (P19)
- Specific characteristic type C: Rome (Q220)
- Main action/occurrence/property D: Work location (P937)
- Involved object E:
- Starting date F: "1900-01-01"
- End date G: "2000-01-01"

5) Philosophers between BC/BCE 400 and BC/BCE 360: 45 results (20.943 seconds)

- Item type A: [human \(Q5\)](#)
- Specific characteristic B: Occupation (P106)
- Specific characteristic type C: Philosopher(Q4964182)
- Main action/occurrence/property D:
- Involved object E:
- Starting date F: "-0400-01-01"
- End date G: "-0370-01-01"

If you would like to search items Before Christ/Before Common Era (BC/BCE), simply add the prefix "-" (minus) in front of YYYY-MM-DD format. More about complicated dates setting, read Note in the search results.

**Tip:** You can enjoy exploring philosopher's network in the graph view



6) People who were educated at Oxford University: 12387 results (36.383 seconds)

- Item type A: [human \(Q5\)](#)
- Specific characteristic B:
- Specific characteristic type C:
- Main action/occurrence/property D: [educated at \(P69\)](#)
- Involved object E: [University of Oxford \(Q34433\)](#)
- Starting date F:
- End date G:

7) People who participated in Thirty Years' War: 366 results (8.64 seconds)

- Item type A: [human \(Q5\)](#)
- Specific characteristic B:
- Specific characteristic type C:
- Main action/occurrence/property D: [conflict \(P607\)](#)
- Involved object E: [Thirty Years' War \(Q2487\)](#)
- Starting date F:
- End date G:

8) People who were buried in the Vienna Central Cemetery: 1265 results (9.635 seconds)

- Item type A: [human \(Q5\)](#)
- Specific characteristic B:
- Specific characteristic type C:
- Main action/occurrence/property D: [place of burial \(P119\)](#)

- Involved object E: [Vienna Central Cemetery \(Q240744\)](#)
- Starting date F:
- End date G:

9) People who were the member of Der Blau Reiter: 9 results (4.901 seconds)

- Item type A: [human \(Q5\)](#)
- Specific characteristic B:
- Specific characteristic type C:
- Main action/occurrence/property D: [member of \(P463\)](#)
- Involved object E: [The Blue Rider \(Q117035\)](#)
- Starting date F:
- End date G:

10) People who were the member of Der Blau Reiter: 9 results (4.901 seconds)

- Item type A: [human \(Q5\)](#)
- Specific characteristic B: [Sex or gender \(P21\)](#)
- Specific characteristic type C: [transgender \(Q189125\)](#)
- Main action/occurrence/property D:
- Involved object E:
- Starting date F:
- End date G:

11) People whose family name is Rosenberg: 1557 results (7.57 seconds)

- Item type A: [human \(Q5\)](#)
- Specific characteristic B: [family name \(P734\)](#)
- Specific characteristic type C: [Rosenberg \(Q1159003\)](#)
- Main action/occurrence/property D:
- Involved object E:
- Starting date F:
- End date G:

## Look for Places and Buildings

12) Castles that have accessible toilets and are associated with time between 1000 and 1300: 45 results (6.018 seconds)

- Item type A: Castle (Q23413)
- Specific characteristic B: has facility (P912)
- Specific characteristic type C: accessible toilet (Q2775009)
- Main action/occurrence/property D:
- Involved object E:
- Starting date F: "1000-01-01"
- End date G: "1300-01-01"

13) Squares in the UK: 261 results (7.42 seconds)

- Item type A: [square \(Q174782\)](#)
- Specific characteristic B:
- Specific characteristic type C:
- Main action/occurrence/property D: [country \(P17\)](#)
- Involved object E: [United Kingdom \(Q145\)](#)
- Starting date F:
- End date G:

14) Neighboring countries of Switzerland: 5 results (3.599 seconds)

- Item type A: [country \(Q6256\)](#)
- Specific characteristic B: [shares border with \(P47\)](#)
- Specific characteristic type C: [Switzerland \(Q39\)](#)
- Main action/occurrence/property D:
- Involved object E:
- Starting date F:
- End date G:

15) Big cities in China: 277 results (7.809 seconds)

- Item type A: [big city \(Q1549591\)](#)
- Specific characteristic B:
- Specific characteristic type C:
- Main action/occurrence/property D: [country \(P17\)](#)
- Involved object E: [People's Republic of China \(Q148\)](#)

- Starting date F:
- End date G:

## Look for art and objects

16) Operas between 1700 and 1800: 55 results (8.164 seconds)

- Item type A: [dramatico-musical work \(Q58483083\)](#)
- Specific characteristic B: [genre \(P912\)](#)
- Specific characteristic type C: [opera \(Q2775009\)](#)
- Main action/occurrence/property D:
- Involved object E:
- Starting date F: "1700-01-01"
- End date G: "1800-01-01"

17) Paintings created by Johannes Vermeer: 43 results (5.494 seconds)

- Item type A: [painting \(Q3305213\)](#)
- Specific characteristic B:
- Specific characteristic type C:
- Main action/occurrence/property D: [creator \(P170\)](#)
- Involved object E: [Johannes Vermeer \(Q41264\)](#)
- Starting date F:
- End date G:

18) Films starring Harrison Ford: 68 results (6.939 seconds)

- Item type A: [film \(Q11424\)](#)
- Specific characteristic B:
- Specific characteristic type C:
- Main action/occurrence/property D: [cast member \(P161\)](#)
- Involved object E: [Harrison Ford \(Q81328\)](#)
- Starting date F:
- End date G:

19) Composition performed by Queen: 128 results (5.986 seconds)

- Item type A: [musical work/composition \(Q105543609\)](#)
- Specific characteristic B:

- Specific characteristic type C:
- Main action/occurrence/property D: [performer \(P175\)](#)
- Involved object E: [Queen \(Q15862\)](#)
- Starting date F:
- End date G:

20) Collection of archaeological artifacts in the British Museum: 128 results (5.986 seconds)

- Item type A: [archaeological artifact \(Q220659\)](#)
- Specific characteristic B:
- Specific characteristic type C:
- Main action/occurrence/property D: [collection \(P195\)](#)
- Involved object E: [British Museum \(Q6373\)](#)
- Starting date F:
- End date G:

21) Television series in 1965: 357 results (54.226 seconds)

- Item type A: [television series \(Q5398426\)](#)
- Specific characteristic B:
- Specific characteristic type C:
- Main action/occurrence/property D:
- Involved object E:
- Starting date F: "1965-01-01"
- End date G:

## Look for Events

22) Earthquakes between 1850 and 1900: 103 results (8.775 seconds)

- Item type A: Earthquake (Q7944)
- Specific characteristic B:
- Specific characteristic type C:
- Main action/occurrence/property D:
- Involved object E:
- Starting date F: "1850-01-01"
- End date G: "1900-01-01"

**Tip:** It is possible not to specify many parameters, but you have to learn which input should be filled and how many results could be returned.



## Look for Other Types

23) Airports which have scheduled flights to Narita airport: 4 results (4.568 seconds)

- Item type A: [airport \(Q1248784\)](#)
- Specific characteristic B:
- Specific characteristic type C:
- Main action/occurrence/property D: [scheduled service destination \(P521\)](#)
- Involved object E: [Narita International Airport \(Q36454\)](#)
- Starting date F:
- End date G:

**Tip:** You can see the source database is far from perfect. Over time correct information would be updated. There should also be other ways to find a more comprehensive answer, meaning that it is not easy to find the right query pattern with millions of pattern combinations.

24) Treaties made in The Hague: 14 results (6.818 seconds)

- Item type A: [treaty \(Q131569\)](#)
- Specific characteristic B:
- Specific characteristic type C:
- Main action/occurrence/property D: [location \(P276\)](#)
- Involved object E: [The Hague \(Q36600\)](#)
- Starting date F:
- End date G:

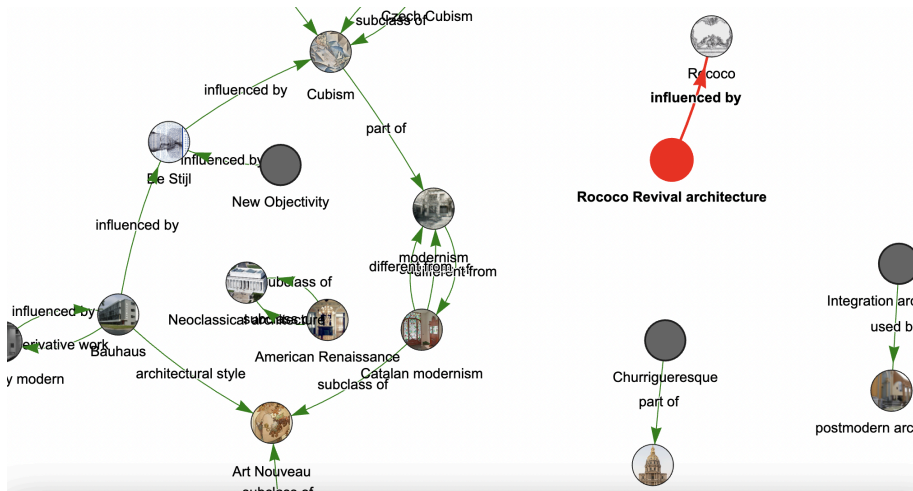
25) Art movements between 1 and 2000: 276 results (10.005 seconds)

- Item type A: Art movement (Q968159)
- Specific characteristic B:
- Specific characteristic type C:
- Main action/occurrence/property D:
- Involved object E:
- Starting date F: "0001-01-01"
- End date G: "2000-01-01"

26) Architectural style between 1 and 2000: 85 results (5.985 seconds)

- Item type A: Architectural style (Q32880)

- Specific characteristic B:
- Specific characteristic type C:
- Main action/occurrence/property D:
- Involved object E:
- Starting date F: "0001-01-01"
- End date G: "2000-01-01"



## 27) Music genres between 1 and 2000: 1000+ results (62.518 seconds)

- Item type A: Music genres (Q188451)
- Specific characteristic B:
- Specific characteristic type C:
- Main action/occurrence/property D:
- Involved object E:
- Starting date F: "0001-01-01"
- End date G: "2000-01-01"

**Tip:** This query is possible, but, in terms of volume and time, it is a border line.

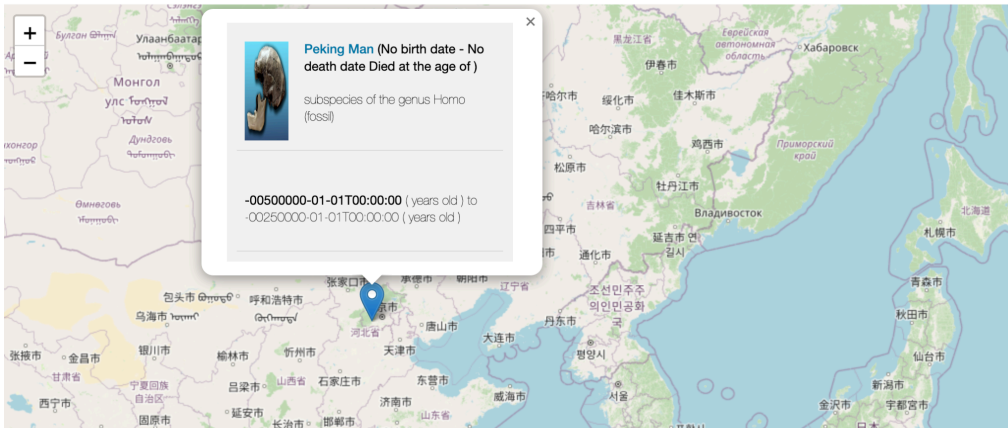
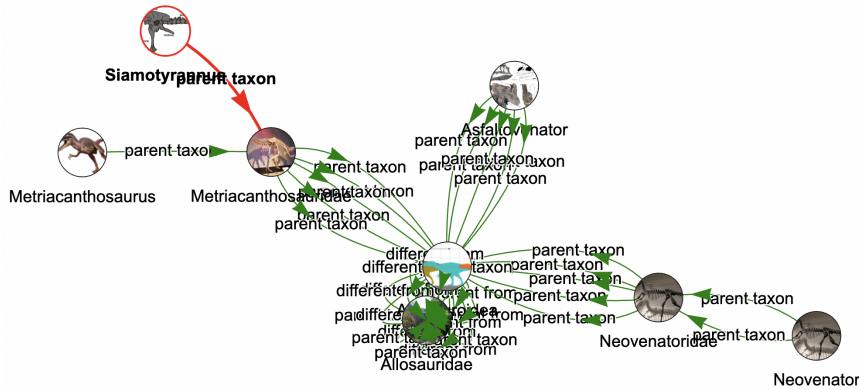
## 28) Ideologies between 1 and 2000: 9 results (4.426 seconds)

- Item type A: Ideology (Q7257)
- Specific characteristic B:
- Specific characteristic type C:
- Main action/occurrence/property D:
- Involved object E:
- Starting date F: "0001-01-01"
- End date G: "2000-01-01"

**Tip:** A broad concept like ideology often does not return many results, maybe due to the vague definition and lack of consensus for the information about time and space.

## 29) Fossil taxon of all time: 1000+ results (35.011 seconds)

- Item type A: Fossil taxon (Q23038290)
- Specific characteristic B:
- Specific characteristic type C:
- Main action/occurrence/property D:
- Involved object E:
- Starting date F:
- End date G:



**Tip:** You can find dinosaurs and our ancestors by using fossil taxon without specifying time. A downside is that it is not possible to display items in timeline, because they are out of the maximum time range.

## 2. Group Search behind the scene

About dates in ReKisstory

## **BC (Before Christ) /BCE (Before Common Era) and AD (Anno Domini) Common Era (CE)**

Due to our outstanding features, we support both periods, covering the most important section of human history.

Only a little tricky thing is the slightly confusing syntax used describing dates.

### **Date limit**

Maximum date for timeline display is ca 270,000 years for both directions (BC/BCE and AD/CE). This limitation comes from a visualization of the timeline. It implied that unfortunately we cannot display items beyond this range. For example, fossil taxon “Neanderthal” and “” cannot be shown. The same goes for extinct species like dinosaurs, as well as astronomical stars. See more on [moment.js](#) and [expanded years](#) in the ECMAScript specification